

Panel Data Research Center, Keio University

PDRC Discussion Paper Series

【日英共同研究による実証研究シリーズ】

COVID-19 ショックと所得格差：日本と英国における恒久的および
一時的な影響に関するパネルデータ分析

白石 憲一

2024 年 12 月 2 日

DP2024-005

<https://www.pdr.c.keio.ac.jp/publications/dp/9273/>



Panel Data Research Center, Keio University
2-15-45 Mita, Minato-ku, Tokyo 108-8345, Japan
info@pdr.c.keio.ac.jp
2 December, 2024

【日英共同研究による実証研究シリーズ】

COVID-19 ショックと所得格差：日本と英国における恒久的および一時的な影響に関するパネルデータ分析

白石 憲一

PDRC Keio DP2024-005

2024年12月2日

JEL Classification: C23; D31

キーワード：恒常的な不平等；一時的な不平等；ランダム成長モデル

【要旨】

本研究では、パネルデータを用いて、日本と英国における労働市場リスクに対する COVID-19 ショックの影響を検証し、所得格差の変化が恒久的か一時的かを重点的に調査した。この分析により、3つの重要な結果が得られた。第1に、ランダム効果とランダム成長パラメータ間の負で有意な共分散は、初期収入の低下がより高い収入成長率と関連していることを示している。第2に、不平等の一時的な要素は、2021年に増加するケースもあり、影響を受けた世帯に対する所得維持政策の妥当性を裏付けている。第3に、コホートが年齢を重ねるにつれ、不平等の一時的な要素は拡大し、一時的な所得ショックによって生じた高齢者の所得制度における格差に対処するための一時的な公的支援政策が必要となる。

白石 憲一

群馬医療福祉大学社会福祉学部

〒371-0823

群馬県前橋市川曲町191-1

shiraishi@shoken-gakuen.ac.jp

謝辞：慶應義塾大学経済研究所パネルデータ設計・解析センターより、日本家計パネル調査および慶應家計パネル調査の二次データをご提供いただきました。英国データサービスより、Understanding Society: The UK Household Longitudinal Studyの二次データをご提供いただきました。本研究は、日本学術振興会のJRP-LEAD（英国との国際共同研究プログラム）の支援を受けて実施されました（助成番号：JPJSJRP 20211706）。

The COVID-19 Shock and Income Inequality: A Panel Data Analysis of Permanent and Transitory Effects in Japan and the U.K.

1. Introduction

This study examines the impact of the COVID-19 shock on labor market risk in Japan and the U.K. using panel data, focusing on whether the changes in income inequality are permanent or temporary. Effective policy depends on the relative magnitude of the permanent and temporary phenomena. For example, job training suits households with significant permanent income fluctuations, while income maintenance policies are needed for households with large temporary income fluctuations (Meghir and Pistaferri, 2011).

This study decomposes income changes into permanent and transitory shocks using univariate earnings data. An empirical study on individual earnings dynamics using Japanese panel data was conducted by Abe and Inakura (2007), who analyzed the dynamic characteristics of male earnings and working hours. They estimated a pure random walk model, a pure measurement error model, a mixed random walk and measurement error model, and a general MA(2) model. Abe and Inakura (2008) analyzed a linear income process where permanent income follows a random walk, quantitatively measuring the permanent components of earnings in Japan. Okubo (2015) estimated a profile heterogeneity model, with evidence supporting its applicability to the Japanese male income process.

This paper is organized as follows: Section 2 details the data and estimation methodology; Section 3 presents empirical results for Japan; Section 4 presents empirical results for the U.K.; and Section 5 concludes the paper.

2. Empirical Analysis

2.1 Data

The Japanese Household Panel Survey (JHPS/KHPS) was used in this study. This panel survey collects data on adult men, women, and their spouses across the country. The KHPS was first used in 2004 and received responses from approximately 4,000 respondents and their spouses; new survey targets were added in 2007 and 2012. The JHPS began being used in 2009 and received responses from approximately 4,000 respondents and their spouses; new survey targets were added in 2019. In 2014, the (former) JHPS and (former) KHPS, which had been conducted and managed as separate surveys, were integrated and renamed the “Japanese Household Panel Survey (JHPS/KHPS).”

For the UK, the *Understanding Society: UK Household Longitudinal Study* was used. This survey was launched in 2009, incorporating the British Household Panel Survey (BHPS). It covers all regions and countries in the UK, and the first wave sample comprised approximately 40,000 households.

2.2 Statistical models

The following models were used:

(1) AR(1), random growth model

$$y_{i,t} = g(\theta_t^0, X_{i,t}) + p_t f(\alpha^i, \beta^i, X_{i,t}) + \lambda_t v_{i,t}$$

(2) AR(1), random walk model

$$y_{i,t} = g(\theta_t^0, X_{i,t}) + p_t u_{i,t} + \lambda_t v_{i,t}$$

(3) ARMA(1,1): no growth heterogeneity or AR (1): no growth heterogeneity

$$y_{i,t} = g(\theta_t^0, X_{i,t}) + p_t f(\alpha^i) + \lambda_t v_{i,t}$$

Here $y_{i,t}$ is inflation-adjusted earnings of individual i and in year t . $g(\theta_t^0, X_{i,t})$ captures the “life cycle” components of earnings common to all individuals, modeled as a quadratic polynomial in “potential” experience, h . The individual-specific “life cycle” components of earnings is given by $f(\alpha^i, \beta^i, X_{i,t}) \equiv \alpha^i + \beta^i h_{it}$, where α and β reflect the differences in the amount of on-the-job training that individuals receive in the early career stages. For example, individuals may accept low initial income from jobs that require considerable skills development because they expect their income to rise steadily in the future. The variances of α^i and β^i are σ_α^2 and σ_β^2 , respectively. Their covariance is denoted as $\sigma_{\alpha\beta}$, representing the relationship between the random effect and the random growth parameter. It is expected that α and β are negatively correlated.

$u_{i,t} = u_{i,(t-1)} + w_{i,t}$ follows a random walk process. The variance of $w_{i,t}$ is given by σ_w^2 . $v_{i,t} = \rho v_{i,t-1} + \theta \epsilon_{i,t-1} + \epsilon_{i,t}$ follows either an AR(1) or ARMA(1,1) process. The variance of $\epsilon_{i,t}$ is given by σ_ϵ^2 . p_t , λ_t are the time-varying factor loadings. As panel datasets often cannot observe individuals at the beginning of their careers, the initial variance

σ_{v1}^2 is included as an extra parameter (MaCurdy, 1982). The permanent components of inequality are represented by $p_t f(\alpha^i, \beta^i, X_{i,t}) + p_t u_{i,t}$, while $\lambda_t v_{i,t}$ is the transitory component of inequality.

Model (1) was applied to the following samples: individuals born between 1959 and 1975, those born before 1960 in Japan, the full sample, university graduates, non-university graduates, individuals born after 1974, and individuals born between 1959 and 1975 in the U.K. Model (2) was used for the full sample and non-university graduates in Japan. Model (3) was applied to university graduates, individuals born after 1974 in Japan, and those born before 1960 in the U.K.

The logarithm of residuals from a first-stage regression of earnings on “potential” experience and “potential” experience squared of the worker is the sum of a permanent component and a transitory component. I predict that the permanent and transitory components of inequality will change over time. Estimation follows a generalized method of moments for the covariance structure of earnings. For finite samples, it is preferable to use an identity matrix rather than an optimal weighting matrix (Altonji and Segal, 1996; Clark, 1996), with the parameters estimated using nonlinear least squares.

The criteria for sample selection were: (i) male head of household and (ii) under 65 years of age. Finally, the measure of “potential” experience is defined as $h = \text{age} - \text{number of years in school} - 6$.

3. Estimation Results in Japan

Table 1 summarizes the estimation results for the entire sample, as well as educational background. The coefficients are significant at the 1% level, and the sign conditions are satisfied. The transitory shock has a moderate persistence due to the size of ρ .

Table 1. Estimation results in Japan

	Full sample	University graduate sample	Non-university graduate sample
σ_α^2	0.0481518***	0.0707258***	0.0204435***
ρ	0.4722199***	0.5135877***	0.4637231***
σ_{v1}^2	0.163556***	0.2221649***	0.1322833***
σ_ε^2	0.045022***	1.173977***	0.0474754***
σ_w^2	0.002017***		0.0024192***

Note: Significant level: ***p<0.01, **p<0.05, *p<0.1. Factor loadings are present in all estimates but are not shown.

Table 2 summarizes the estimation results by cohort. The coefficients are significant at the 1% level except σ_{β}^2 for individuals born before 1960; the sign conditions are satisfied. The estimated ρ indicates moderate persistence of transitory shock. $\sigma_{\alpha\beta}$ is negative for cohorts born between 1959 and 1975 and those born before 1960; this suggests that early low income in the labor market leads to higher income growth rates.

Table 2. Estimation results by cohort in Japan

	Born after 1974	Born after 1959 and before 1975	Born before 1960
σ_{α}^2	0.0137617***	0.2579519***	0.4189513***
ρ	0.4054886***	0.4081424***	0.6684234***
σ_{v1}^2	0.3317282***	0.0698556***	0.1785284***
σ_{ε}^2	0.0831172***	0.0139986***	0.0313322***
σ_{β}^2		0.0001212***	0.0000883*
$\sigma_{\alpha\beta}$		-0.0048845***	-0.0066539***

Note: Significant level: ***p<0.01, **p<0.05, *p<0.1. Factor loadings are present in all estimates but are not shown.

Figures 1 through 6 graphically illustrate the predicted permanent (Perm 1) and transitory (Temp 1) components of inequality in Japan. *Predicted_total 1* and *actual_total 1* compare actual and predicted inequality. In the sample born before 1960, the transitory income shocks were larger than the permanent income shocks for most years. In the university graduate sample, and those born between 1959 and 1975, the transitory shock to earnings increases in 2021. Transitory income support is expected to benefit these households in 2021. As a cohort ages, the transitory component of inequality tends to increase.

Figure 1. Predicted permanent and transitory components in Japan (full sample)

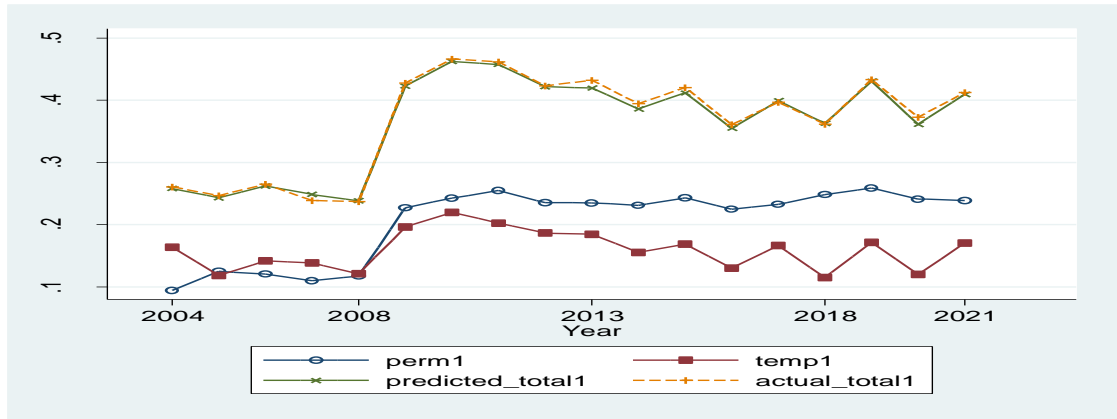


Figure 2. Predicted permanent and transitory components in Japan (university graduate sample)

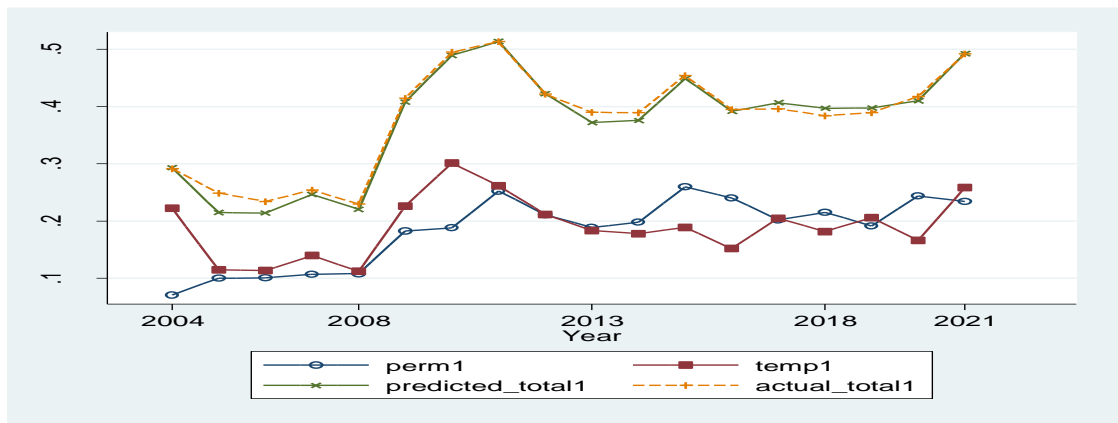


Figure 3. Predicted permanent and transitory components in Japan (non-university graduate sample)

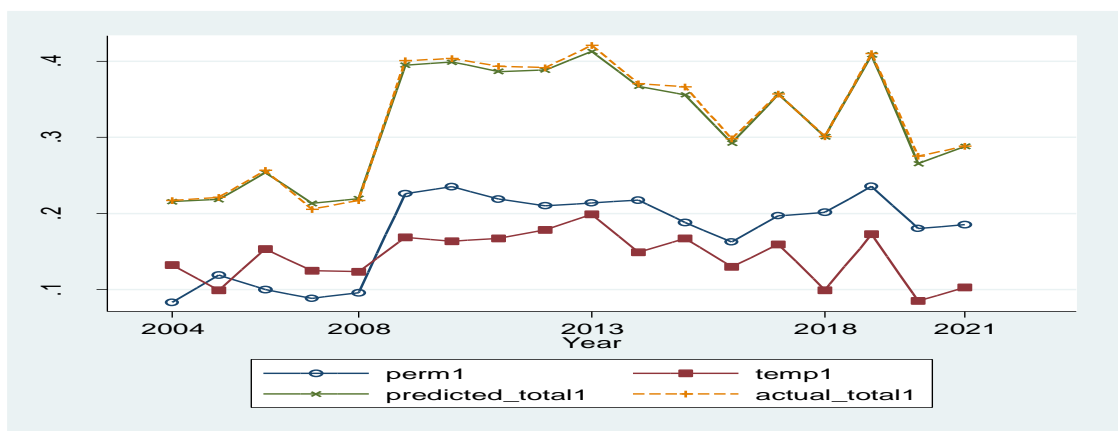


Figure 4. Predicted permanent and transitory components in Japan (sample born after 1974)

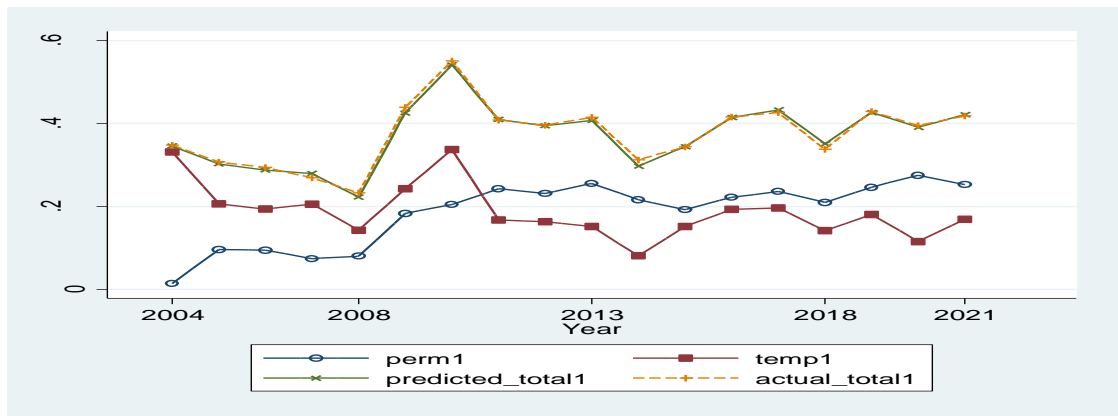


Figure 5. Predicted permanent and transitory components in Japan (sample born after 1959 and before 1975)

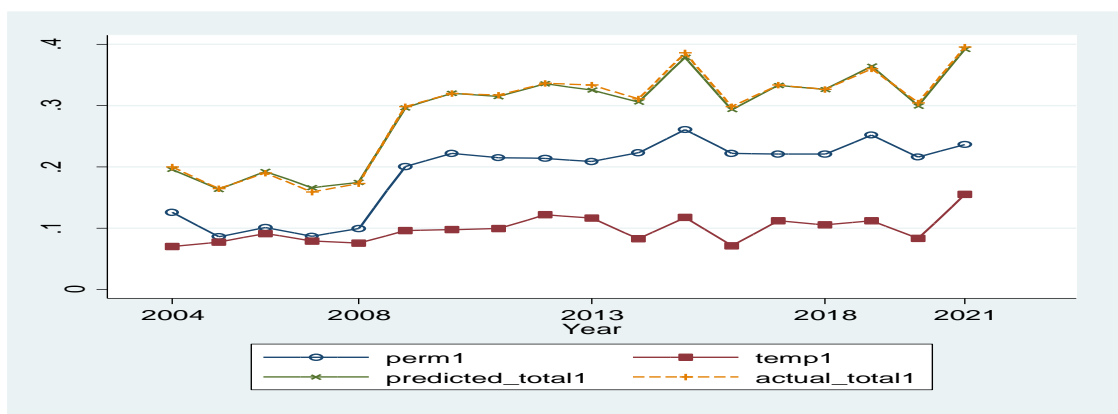
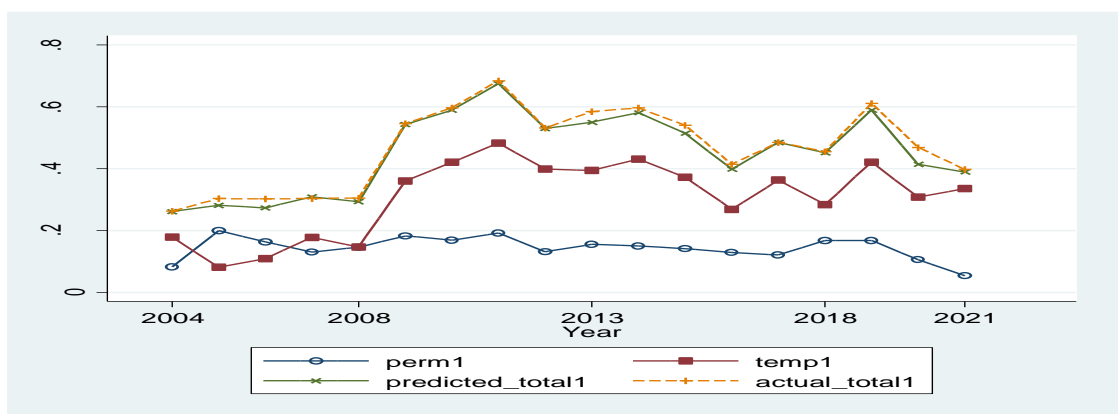


Figure 6. Predicted permanent and transitory components in Japan (sample born before 1960)



4. Estimation results in the U.K.

Table 3 summarizes the estimation results for the entire sample, as well as educational background. The coefficients are significant at the 1% level except σ_ε^2 , and the sign conditions are satisfied. The transitory shock has moderate persistence due to the size of ρ . As $\sigma_{\alpha\beta}$ is negative, having a low income early in the labor market leads to a high income growth rate.

Table 3. Estimation results in U.K.

	Full sample	university graduate sample	non-university graduate sample
σ_α^2	0.9336908***	0.7637845***	0.8625228***
ρ	0.2554623***	-0.0860649***	0.2633644***
σ_{v1}^2	0.1229024***	0.1308269***	0.1038307***
σ_ε^2	0.3037715***	3.167658	0.2275318
σ_β^2	0.0009813***	0.0012022***	0.0008172***
$\sigma_{\alpha\beta}$	-0.0281164***	-0.0279627***	-0.0247266***

Note: Significant level: ***p<0.01, **p<0.05, *p<0.1. Factor loadings are present in all estimates but are not shown.

Table 4 summarizes the estimation results by cohort. The coefficients are significant at the 1% level except σ_{v1}^2 and σ_ε^2 and the sign conditions are satisfied. As $\sigma_{\alpha\beta}$ is negative in samples born after 1974, and between 1959 and 1975, the high income growth rate is associated with low income early in the labor market.

Table 4. Estimation results by cohort in U.K.

	born after 1974	born after 1959 and before 1975	born before 1960
σ_α^2	0.2650424***	0.8312578***	0.340793***
ρ	0.233749***	0.2468361***	0.9232426***
σ_{v1}^2	0.1211727***	0.1071032***	0.0092837**
σ_ε^2	0.2488049***	0.2015158***	0.0066974**
σ_β^2	0.0010512***	0.0006879***	
$\sigma_{\alpha\beta}$	-0.0116432***	-0.0214079***	
θ			-0.4872553***

Note: Significant level: ***p<0.01, **p<0.05, *p<0.1. Factor loadings are present in all

estimates but are not shown.

Figures 7 through 12 graphically illustrate the predicted permanent and transitory earnings components in the U.K. In the sample born before 1960, the transitory income shocks were larger than the permanent income shocks for most years. In the university graduate sample and cohorts born after 1974 and before 1960, the transitory shock to earnings increases in 2021. Transitory income support is expected to be effective in these households in 2021. As a cohort ages, the transitory component of inequality tends to increase.

Figure 7. Predicted permanent and transitory components in the U.K. (full sample)

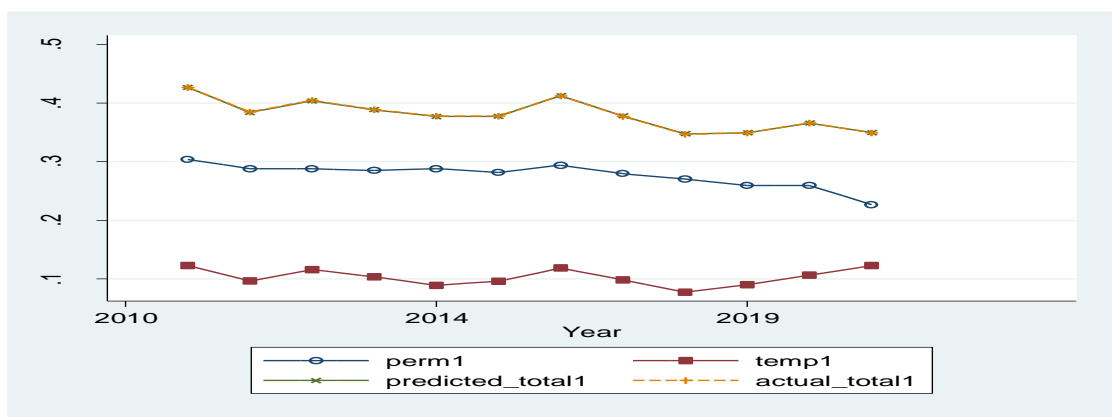


Figure 8. Predicted permanent and transitory components in the U.K. (university graduate sample)

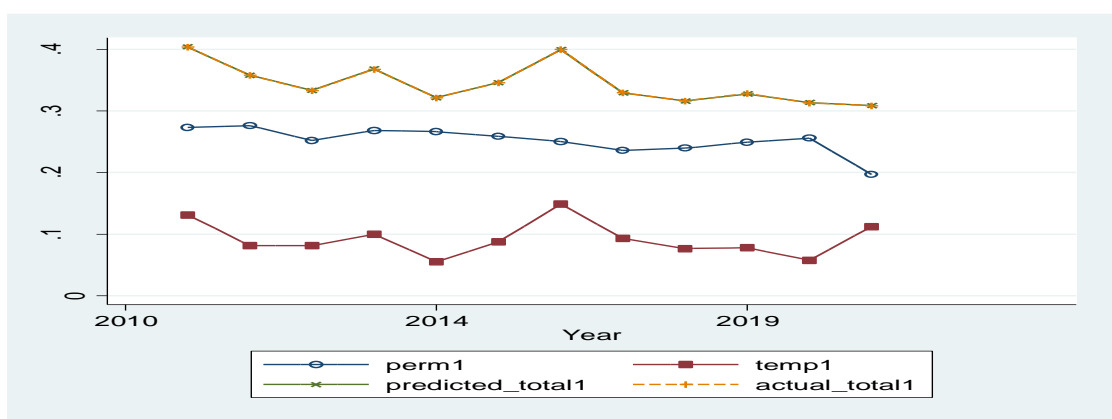


Figure 9. Predicted permanent and transitory components in the U.K. (non-university graduate sample)

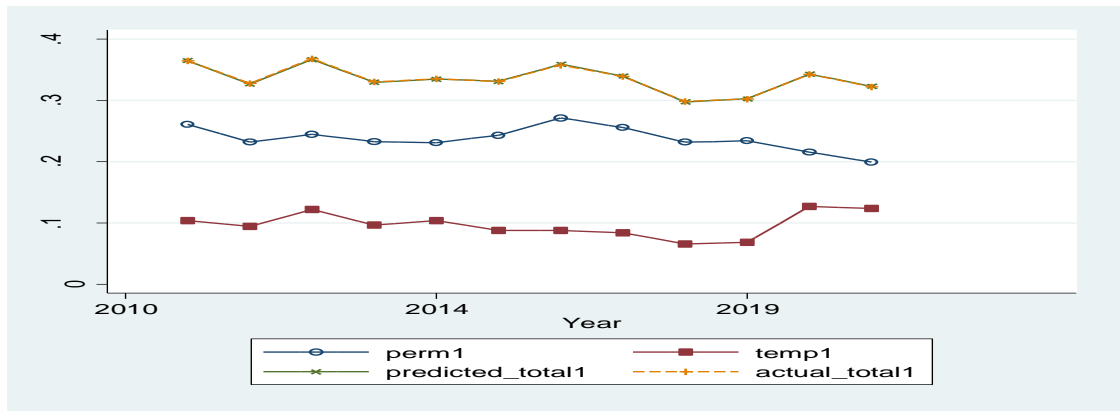


Figure 10. Predicted permanent and transitory components in the U.K. (sample born after 1974)

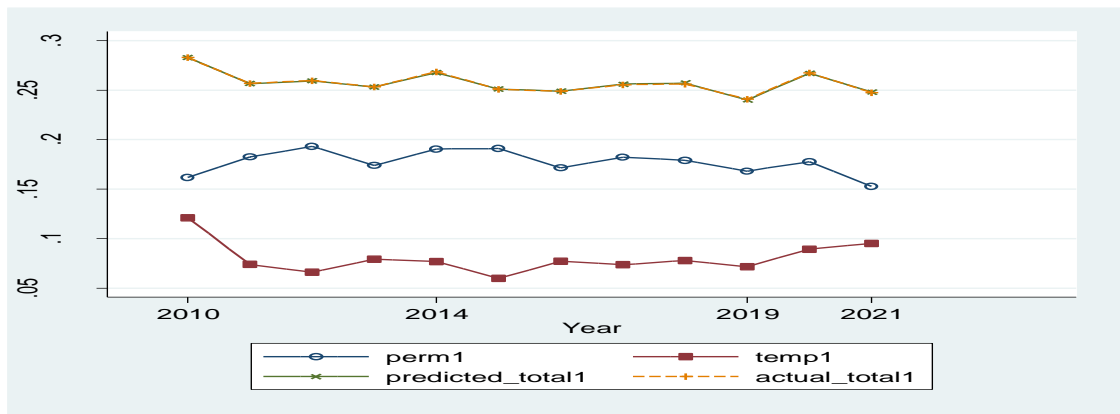


Figure 11. Predicted permanent and transitory components in the U.K. (sample born after 1959 and before 1975)

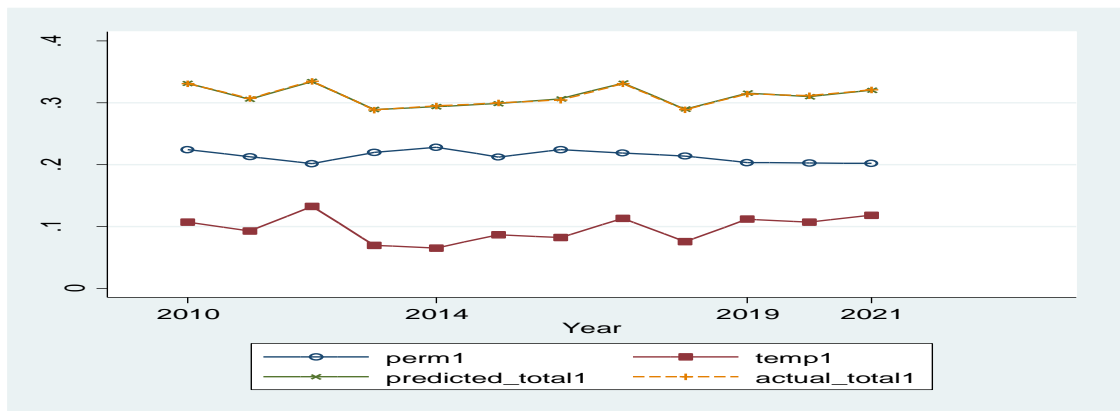
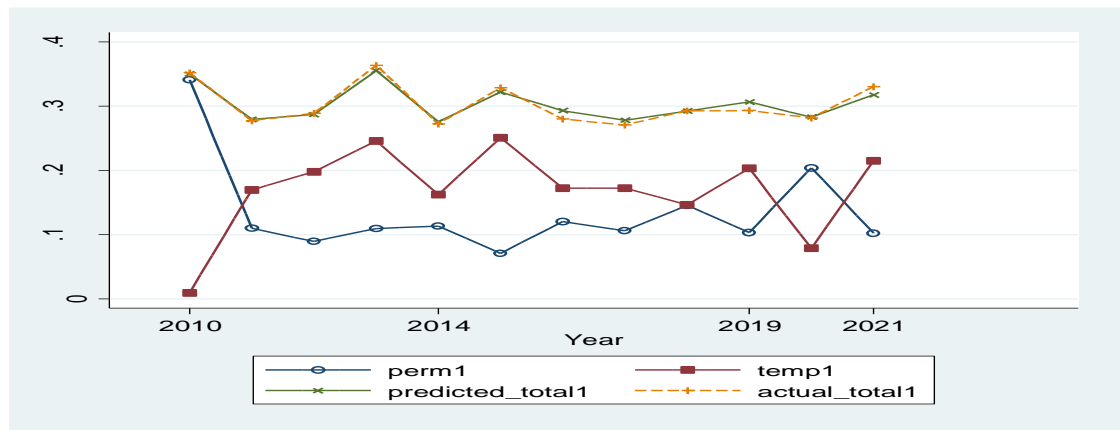


Figure 12. Predicted permanent and transitory components in the U.K. (sample born before 1960)



5. Conclusion

This analysis yields three key findings. First, the covariance between the random effect and random growth parameter is negative and significant, indicating that individuals with lower initial earnings experience higher earnings growth rates. Second, the transitory component of inequality will increase in 2021 in some cases, justifying the income maintenance policies for these households. Third, the transitory component of inequality tends to increase as the cohort ages. Temporary public support policies to help older adults overcome temporary income shocks are necessary to address gaps in their income systems.

Acknowledgments: The Panel Data Research Center, Institute for Economic Studies, Keio University, provided secondary data for the Japan Household Panel Survey and the Keio Household Panel Survey. The UK Data Service provides secondary data for Understanding Society: The UK Household Longitudinal Study. This study was supported by JRP-LEAD with UKRI of the Japan Society for the Promotion of Science (grant number: JPJSJRP 20211706).

References

Abe, M., and N. Inakura 2007. Analysis of the covariance structure of household income processes. *Economic Research* 58: 15–30. in Japanese.

- Abe, M., and N. Inakura 2008. Income inequality and persistent shocks: Understanding inequality from the covariance structure based on household panel data. *Social Security Research* 44: 316–331. In Japanese.
- Altonji, J. G., and L. M. Segal 1996. Small-sample bias in GMM estimation of covariance structures. *Journal of Business and Economic Statistics* 14: 353–366.
- Baker, M. 1997. Growth-rate heterogeneity and the covariance structure of life-cycle earnings. *Journal of Labor Economics* 15: 338–375.
- Clark, T. E. 1996. Small-sample properties of estimators of nonlinear models of covariance structure. *Journal of Business and Economic Statistics* 14: 367–373.
- MaCurdy, T. E. 1982. The use of time series processes to model the error structure of earnings in a longitudinal data analysis. *Journal of Econometrics* 18: 83–114.
- Meghir, C., and L. Pistaferri. 2011. Earnings, consumption and life cycle choices. *Handbook of labor economics* volume 4, part B: 773–854.
- Okubo, M. 2015. Earnings dynamics and profile heterogeneity: Estimates from Japanese panel data. *Japanese Economic Review* 66: 112–146.